

The South Platte River and Alluvial Aquifer

HB 1278 South Platte Groundwater Study

Overview of HB1278

January 24, 2013



An Act

HOUSE BILL 12-1278

BY REPRESENTATIVE(S) Fischer, Becker, Brown, Casso, Coram, Duran, Fields, Kefalas, Labuda, Miklosi, Pabon, Pace, Priola, Ryden, Schafer S., Solano, Todd, Tyler, Vigil, Williams A., Wilson, Young, Nikkel, Sonnenberg, Summers;
also SENATOR(S) Renfro, Brophy, Cadman, Grantham, Jahn, King K., Lambert, Lundberg, Neville, Scheffel, Shaffer B.

CONCERNING THE AUTHORIZATION OF A STUDY OF THE SOUTH PLATTE RIVER ALLUVIAL AQUIFER, AND, IN CONNECTION THEREWITH, MAKING AN APPROPRIATION.

Be it enacted by the General Assembly of the State of Colorado:

SECTION 1. Legislative declaration. (1) The general assembly hereby declares that:

(a) In 1966, the general assembly commissioned a study of the interaction between the South Platte alluvial aquifer and the surface flows in the South Platte river. The general assembly considered this study in passing the "Water Right Determination and Administration Act of 1969", article 92 of title 37, Colorado Revised Statutes, and augmentation plans authorized by the 1969 act are operating on a large scale in the South Platte river basin. Many scientific and technological advances have occurred since

Capital letters indicate new material added to existing statutes; dashes through words indicate deletions from existing statutes and such material not part of act.

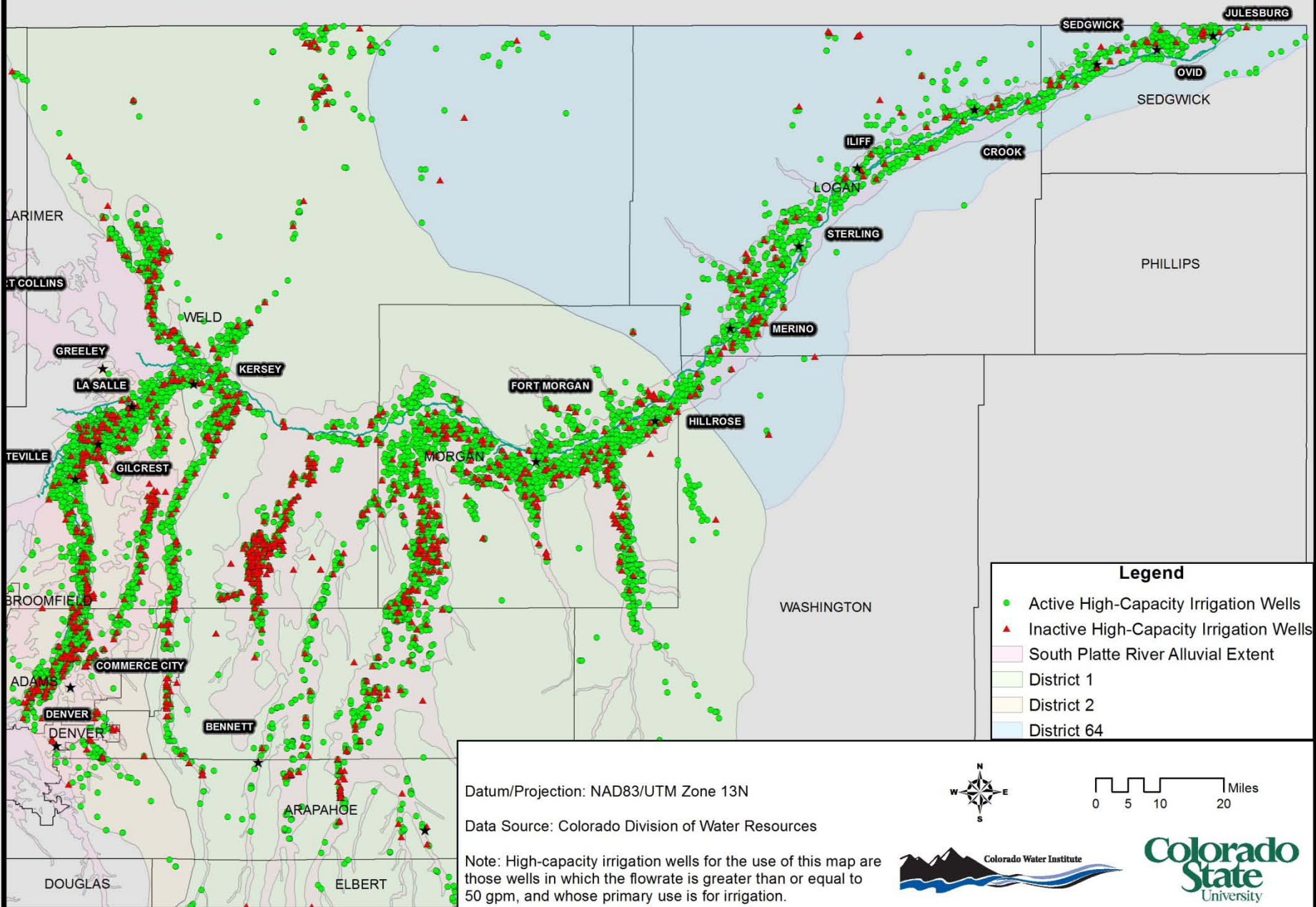
HB12-1278 states that the study's objectives are:

- (i) to evaluate whether current laws and rules achieve the dual goals of protecting senior water rights and maximizing the beneficial use of both surface water and groundwater within the basin;
- (ii) to identify areas within the basin adversely impacted by high groundwater levels and to evaluate of the causes of high groundwater levels in the affected areas;
- (iii) to provide information on measures to mitigate adverse impacts in areas experiencing high groundwater levels;
- (iv) to provide information to the general assembly to facilitate the long-term sustainable use of South Platte water.

In addition, the Institute shall evaluate:

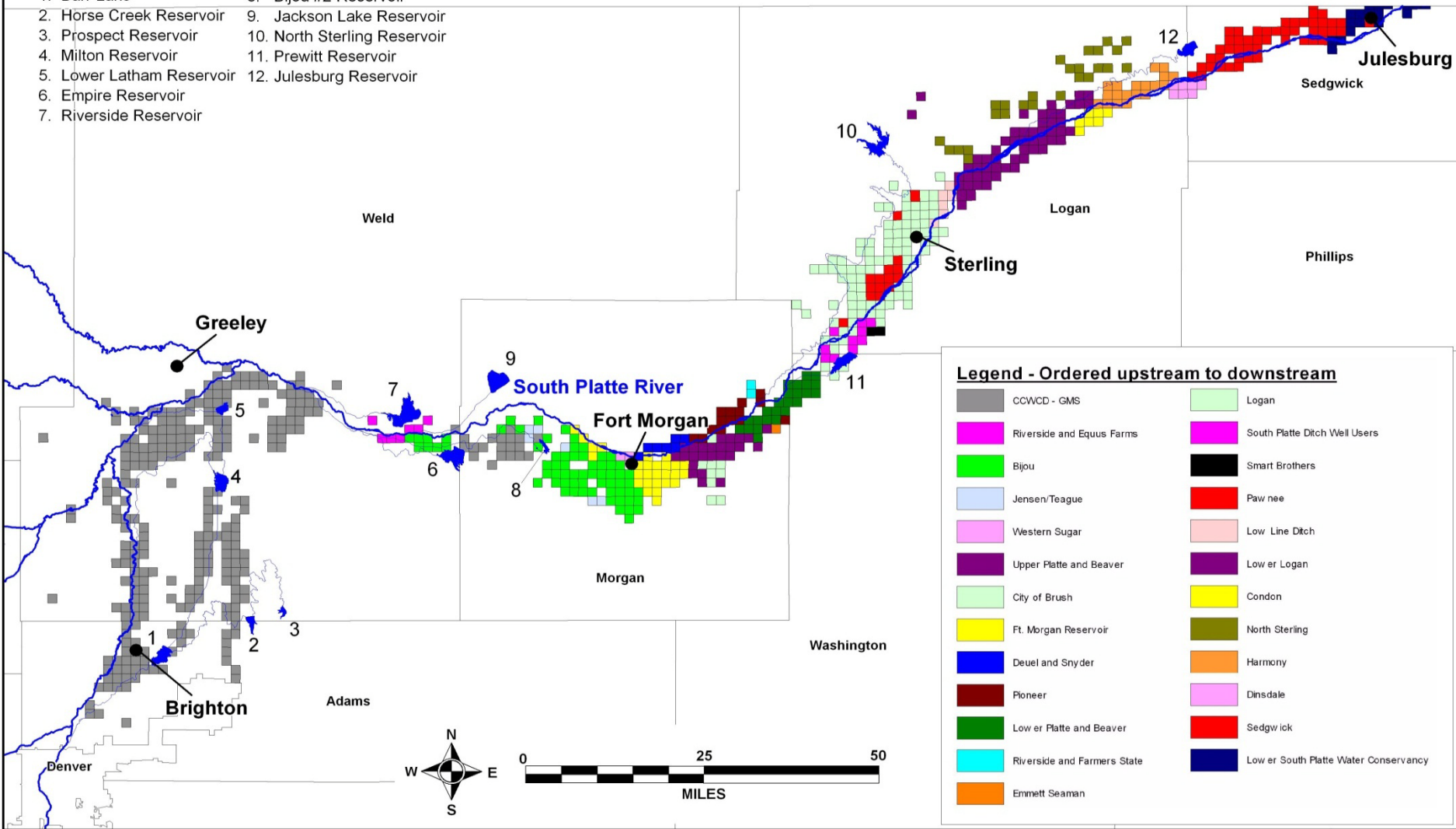
- (i) to what extent augmentation plans are preventing injury to other water rights holders or potentially causing over-augmentation of well depletions;
- (ii) whether additional usage of the alluvial aquifers could be permitted in a manner consistent with protecting senior surface water rights;
- (iii) to what extent, the use of water in the basin could be improved by affording the state engineer additional authority to administer water rights.

High-Capacity Irrigation Wells of the South Platte River Basin



Reservoir Key:

- | | |
|---------------------------|------------------------------|
| 1. Barr Lake | 8. Bijou #2 Reservoir |
| 2. Horse Creek Reservoir | 9. Jackson Lake Reservoir |
| 3. Prospect Reservoir | 10. North Sterling Reservoir |
| 4. Milton Reservoir | 11. Prewitt Reservoir |
| 5. Lower Latham Reservoir | 12. Julesburg Reservoir |
| 6. Empire Reservoir | |
| 7. Riverside Reservoir | |



Legend - Ordered upstream to downstream

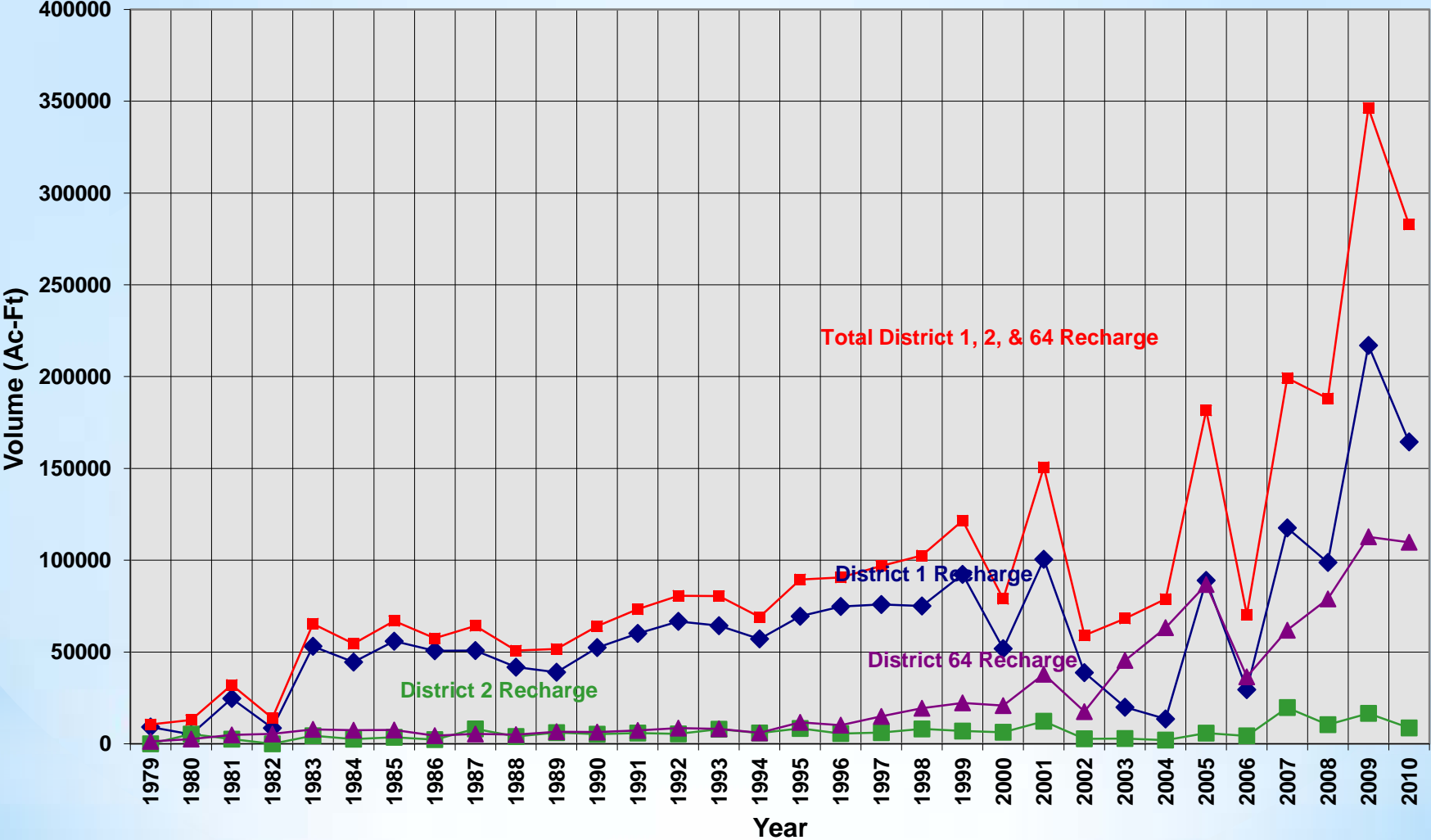
CCWCD - GMS	Logan
Riverside and Equus Farms	South Platte Ditch Well Users
Bijou	Smart Brothers
Jensen/Teague	Pawnee
Western Sugar	Low Line Ditch
Upper Platte and Beaver	Lower Logan
City of Brush	Condon
Ft. Morgan Reservoir	North Sterling
Deuel and Snyder	Harmony
Pioneer	Dinsdale
Lower Platte and Beaver	Sedgwick
Riverside and Farmers State	Lower South Platte Water Conservancy
Emmett Seaman	



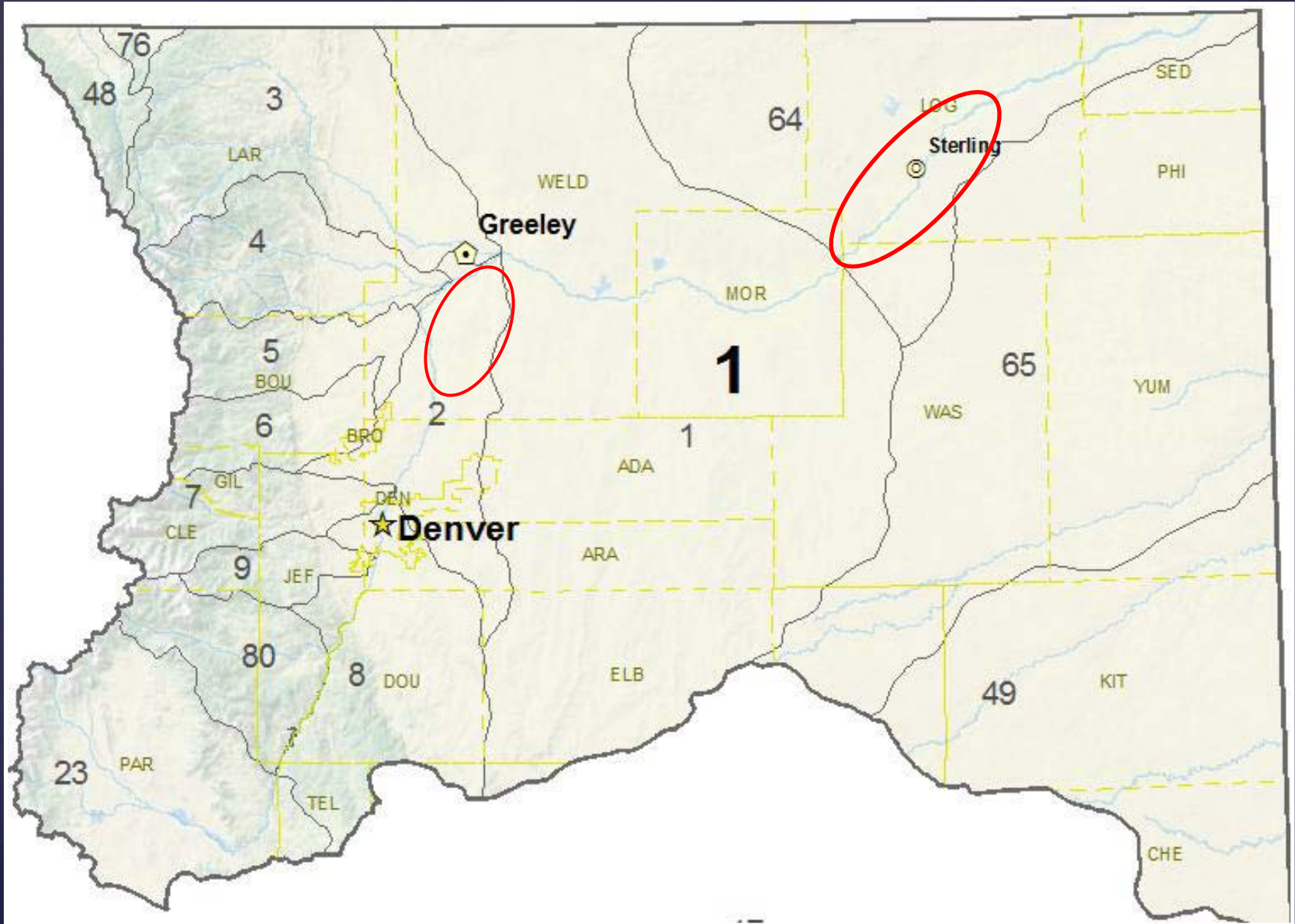
Lower South Platte Decreed Augmentation Plans

Created on:
6/28/2007

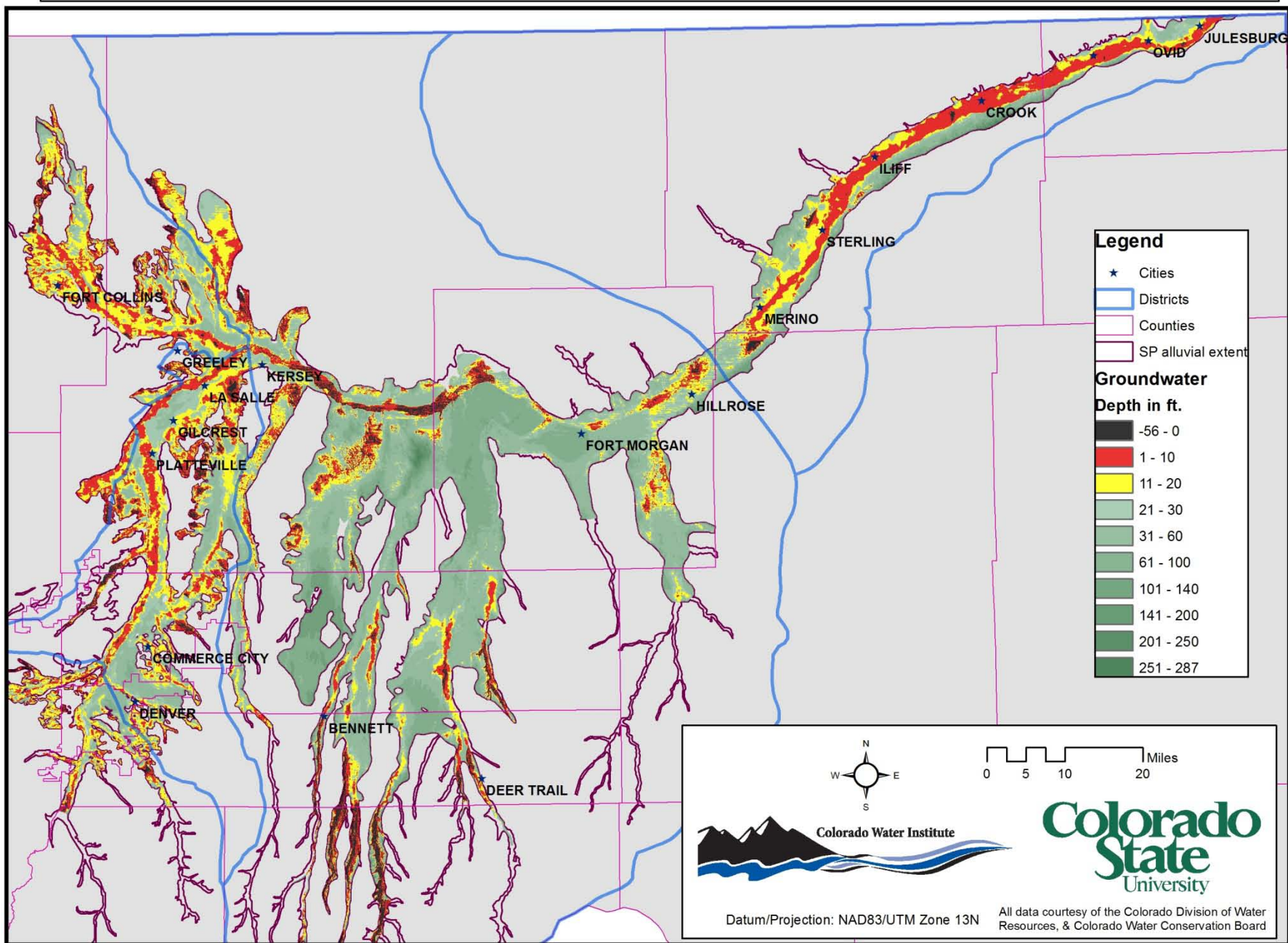
South Platte Recharge



Main Areas of High Groundwater Complaints



Groundwater Depth in the South Platte Alluvial Aquifer



HB1278 Scope of Work

- * Task 1. Data collection, organization and display
- * Task 2. Groundwater mapping
- * Task 3. Evaluation of existing groundwater data
- * Task 4. Stakeholder involvement in data and groundwater problem area identification, mutual problem solving and public education

HB 1278 Project Team

Project Manager: Dr. Reagan Waskom, CWI

Project Outreach: MaryLou Smith, CWI

Project Technical Adviser: Dick Stenzel, Applegate Group

Dr. Suzanne Pashke, USGS

Dr. Tristan Wellman, USGS

Mr. Steve Malers, Riverside Technologies

Ms. Wendy Ryan, Colorado Climate Center

Dr. Domenico Bau, CSU

Dr. Ahmed Eldeiry, CSU

Dr. Luis Garcia, CSU

Mr. Takis Oikonomou, CSU

Mr. Roy Cook, CSU

Ms. Shannon Whittstock, CSU

Mr. John Bustos

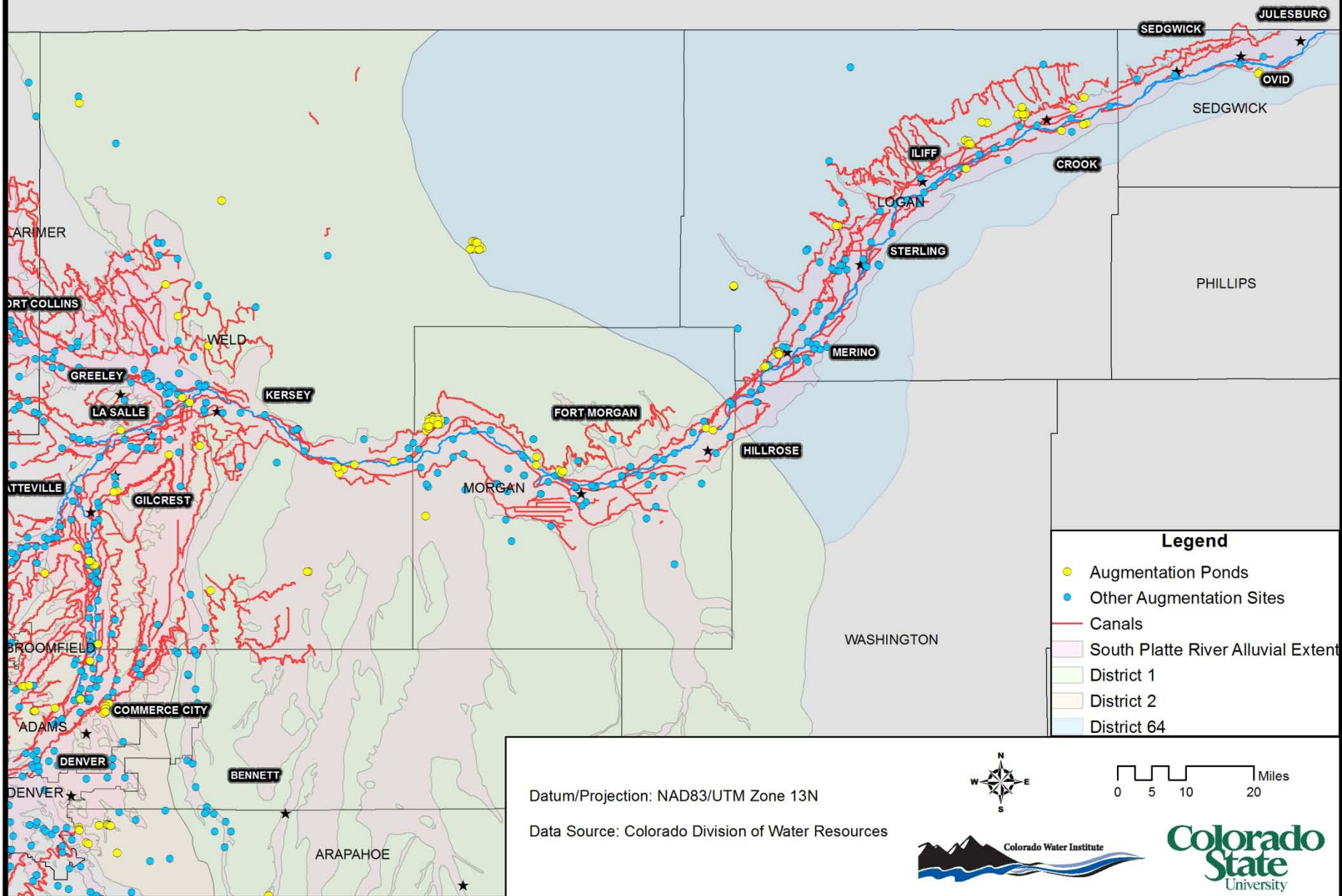
Ms. Beth Plombon, CSU



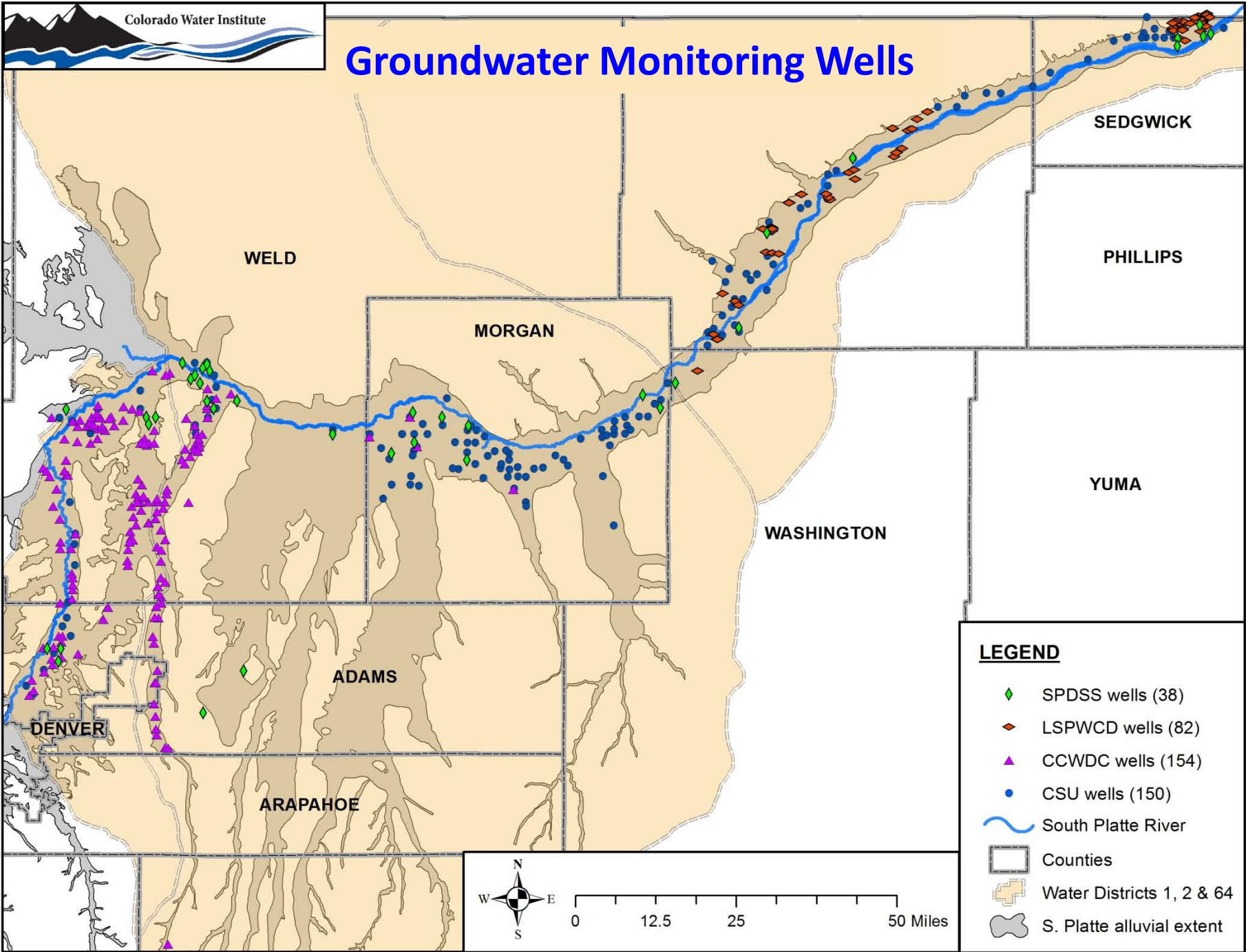
Initial data layers for HB1278 project

Layer	Source
Water management district boundaries	CDSS
Ditch Service Area(1956, 76, 87, 01, 05, 10)	CDSS
SP Alluvial Aquifer Extent	CDSS
Bottom of alluvium elevation - 50ft contours	CDSS
Groundwater level - 50ft contours	CDSS
Aquifer properties	CDSS
Decreed wells (In-Use, Abandoned by court)	CDSS, CCWCD, LSPWCD
High-Capacity Irrigation Wells	HydroBase
Monitoring wells	CDSS, CCWCD, LSPWCD, CSU
Parcel wells (1956, 76, 87, 01, 05, 10)	CDSS
Canals + Ditches	CDSS
Ditch Headgate (1956, 76, 87, 01, 05, 10)	CDSS
Recharge Areas	CDSS - HydroBase
Augmentation Plans	CDSS - HydroBase
Reservoirs	CDSS - HydroBase
Flow Stations	CDSS, USGS-NWIS
Irrigated parcels 2010 (+ 56, 76, 87, 01, 05)	CDSS
Satellite Images (LandSat5 and LandSat7)	USGS
Ortho Images (2003-2012 National Ag. Imagery Program)	USDA-NRCS
Geology	USDA-NRCS
Streamflows	HydroBase, NWIS
Historically Daily Diversion Data	HydroBase
Groundwater Levels	HydroBase, USGS-NWIS, CCWCD, LSPWCD, CSU
Climate	CCC
Snow Pack	CCC
Precipitation	CCC

Canals and Augmentation Sites of the South Platte River Basin



Groundwater Monitoring Wells



WELL ID: SB00406506DAD

Data Source: CCWCD

Source Water: South Platte Alluvial

Structure Type: Irrigation Well

UTM_X
525751

UTM_Y
4465359

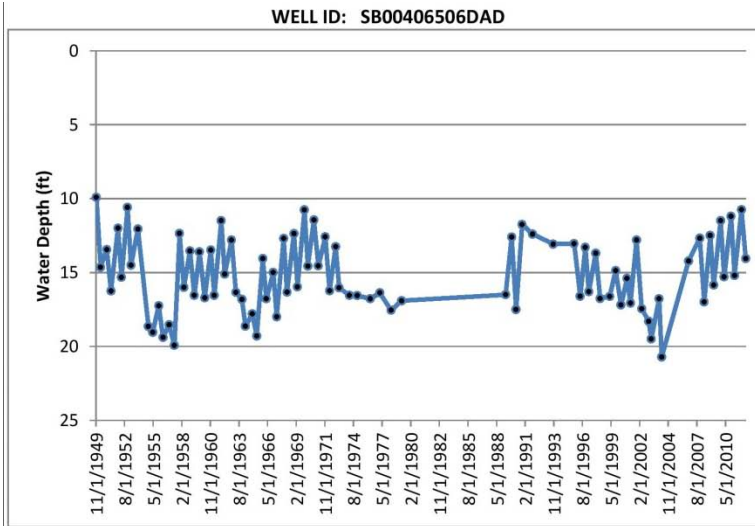
Latitude
40.33837739

Longitude
-104.6968221

District
2

County
Weld

Loc. Update
2/27/2009



WATER LEVEL DATA

WL Date	Water Level
11/8/1949	9.91
4/11/1950	14.64
11/27/1950	13.45
4/4/1951	16.25
12/5/1951	12
4/16/1952	15.33
11/5/1952	10.59
3/25/1953	14.51
11/17/1953	12.07
11/10/1954	18.64
4/4/1955	19.04
11/8/1955	17.25
4/17/1956	19.39
11/13/1956	18.53
5/6/1957	19.92
11/12/1957	12.36
4/2/1958	16
11/12/1958	13.55
4/2/1959	16.55
10/29/1959	13.61
4/6/1960	16.71
11/1/1960	13.48
3/31/1961	16.54
11/8/1961	11.49
3/22/1962	15.11
11/5/1962	12.81
4/9/1963	16.35
11/5/1963	16.83
3/18/1964	18.63
11/5/1964	17.8
4/2/1965	19.3
11/26/1965	14.05
3/15/1966	16.78
11/17/1966	15
3/23/1967	17.99
11/8/1967	12.7
3/22/1968	16.33
11/6/1968	12.37
3/11/1969	15.97

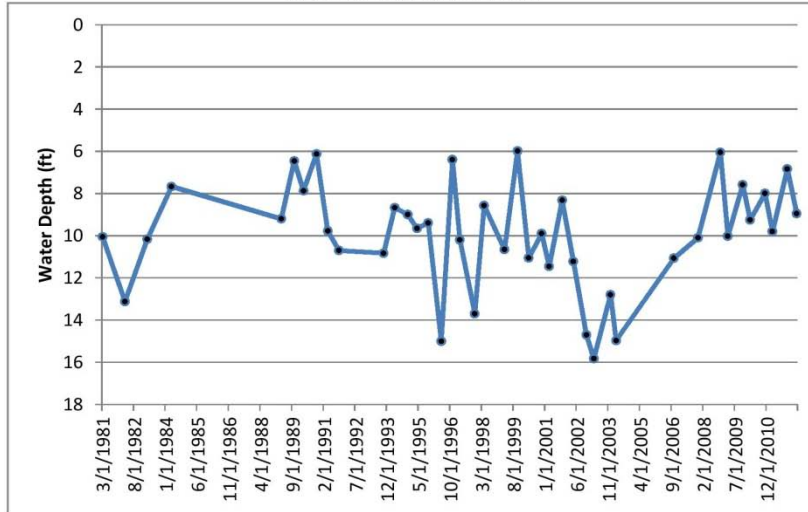
11/6/1969	10.76
3/17/1970	14.57
10/23/1970	11.44
3/22/1971	14.55
11/14/1971	12.59
4/3/1972	16.24
11/14/1972	13.25
3/22/1973	16.04
3/15/1974	16.54
12/31/1974	16.56
3/1/1976	16.77
2/28/1977	16.38
3/9/1978	17.55
3/5/1979	16.91
3/29/1989	16.5
10/16/1989	12.6
3/26/1990	17.5
10/10/1990	11.75
10/18/1991	12.4
10/5/1993	13.08
10/30/1995	13.05
5/9/1996	16.6
11/20/1996	13.3
3/27/1997	16.3
11/5/1997	13.7
4/17/1998	16.76
3/23/1999	16.62
10/27/1999	14.88
4/4/2000	17.2
11/28/2000	15.4
3/5/2001	17.07
10/16/2001	12.81
4/9/2002	17.45
12/5/2002	18.3
3/17/2003	19.49
12/12/2003	16.77
3/17/2004	20.72
10/23/2006	14.23
11/13/2007	12.68
4/1/2008	17
11/10/2008	12.5
3/13/2009	15.85
11/3/2009	11.49
3/23/2010	15.3
11/8/2010	11.2
3/30/2011	15.2
11/7/2011	10.75
4/10/2012	14.05

Source Water: South Platte Alluvial

Structure Type: Irrigation Well

UTM_X	UTM_Y	Latitude	Longitude	District	County	Loc. Update
525731	4462739	40.31477399	-104.6971631	2	Weld	2/27/2009

WELL ID: SB00406518DAA1



WATER LEVEL DATA

WL Date	Water Level
3/9/1981	10.06
3/10/1982	13.12
3/11/1983	10.17
4/4/1984	7.67
3/29/1989	9.2
10/16/1989	6.46
3/26/1990	7.88
10/10/1990	6.13
4/9/1991	9.78
10/18/1991	10.7
10/5/1993	10.83
4/7/1994	8.67
11/1/1994	9
4/16/1995	9.65
10/30/1995	9.4
5/9/1996	15
11/20/1996	6.4
3/27/1997	10.2
11/5/1997	13.7
4/17/1998	8.57
3/23/1999	10.66
10/27/1999	5.98
4/14/2000	11.05
11/28/2000	9.9
3/5/2001	11.46
10/16/2001	8.32
4/9/2002	11.22
11/8/2002	14.7
3/14/2003	15.83
12/15/2003	12.8
3/17/2004	14.97
10/23/2006	11.07
11/13/2007	10.1
11/7/2008	6.05
3/13/2009	10.02
11/3/2009	7.59
3/23/2010	9.25
11/8/2010	8
3/30/2011	9.8

11/7/2011	6.84
4/10/2012	8.95



Copyright © and (P) 1998-2012 Microsoft Corporation and/or its suppliers. All rights reserved.

WELL ID: SB00406614BAA

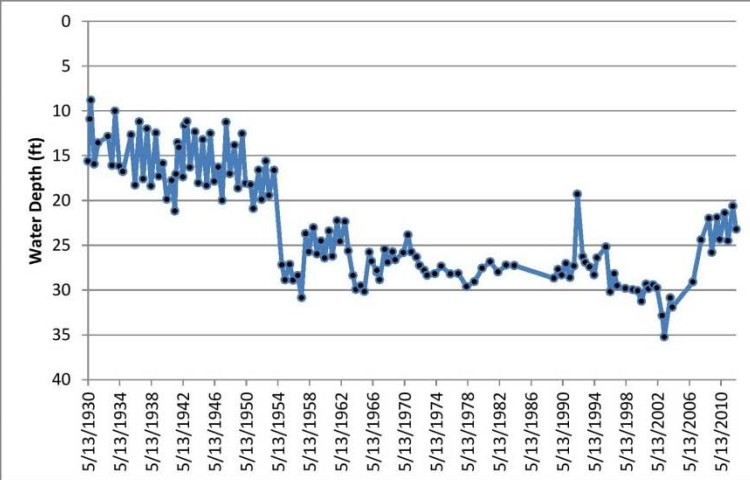
Data Source: CCWCD

Source Water: South Platte Alluvial

Structure Type: Irrigation Well

UTM_X	UTM_Y	Latitude	Longitude	District	County	Loc. Update
521398	4463203	40.31907652	-104.7481436	2	Weld	2/27/2009

WELL ID: SB00406614BAA



WATER LEVEL DATA

WL Date	Water Level
5/13/1930	15.62
8/11/1930	10.93
9/17/1930	8.82
2/26/1931	15.95
8/19/1931	13.58
11/16/1932	12.86
5/27/1933	16.1
10/13/1933	10.03
4/25/1934	16.16
10/9/1934	16.79
10/18/1935	12.69
4/21/1936	18.28
11/11/1936	11.22
4/30/1937	17.6
10/28/1937	12.01
5/2/1938	18.4
12/8/1938	12.47
4/25/1939	17.31
10/25/1939	15.87
4/26/1940	19.86
12/7/1940	17.76
5/8/1941	21.17
6/27/1941	17.05
9/1/1941	13.54
11/11/1941	14.09
5/12/1942	17.38
7/22/1942	11.63
11/16/1942	11.19
3/29/1943	16.32
11/15/1943	12.37
4/24/1944	18.05
11/10/1944	13.23
5/10/1945	18.33
10/29/1945	12.52
4/22/1946	17.88
11/1/1946	16.29
4/28/1947	20
10/27/1947	11.28
4/21/1948	17.03

11/15/1948	13.85
4/20/1949	18.64
11/8/1949	12.55
4/11/1950	18.08
11/27/1950	18.25
4/4/1951	20.91
12/5/1951	16.6
4/16/1952	19.9
11/5/1952	15.63
3/25/1953	19.42
11/17/1953	16.64
11/10/1954	27.2
4/4/1955	28.88
11/8/1955	27.15
4/17/1956	28.89
11/13/1956	28.38
5/6/1957	30.84
11/12/1957	23.7
4/2/1958	25.74
11/12/1958	23.03
4/22/1959	25.97
10/29/1959	24.53
4/5/1960	26.42
11/1/1960	23.4
3/31/1961	26.22
11/8/1961	22.26
3/22/1962	24.57
11/5/1962	22.38
4/9/1963	25.63
11/5/1963	28.37
3/18/1964	29.94
11/5/1964	29.51
4/12/1965	30.15
11/26/1965	25.77
3/15/1966	26.79
11/17/1966	28
11/18/1966	27.8
3/23/1967	28.85
11/7/1967	25.47
3/21/1968	26.7
3/22/1968	26.9
11/6/1968	25.73
3/11/1969	26.62
3/16/1970	25.83
10/23/1970	23.85
3/22/1971	25.76
11/14/1971	26.33
4/4/1972	27.26
11/14/1972	27.77
3/22/1973	28.35
3/13/1974	28.18
12/30/1974	27.34
3/2/1976	28.21
2/28/1977	28.15
3/9/1978	29.6
3/5/1979	29.07
3/5/1980	27.57
3/9/1981	26.85
3/9/1982	27.97
3/11/1983	27.22
4/3/1984	27.26
3/29/1989	28.68
10/16/1989	27.69
3/26/1990	28.33
10/10/1990	27.04
4/9/1991	28.6
10/15/1991	27.3
3/20/1992	19.3
11/18/1992	26.27
3/16/1993	26.92
10/7/1993	27.42
5/3/1994	28.3
9/13/1994	26.4
10/30/1995	25.18
5/9/1996	30.18
11/13/1996	28.18
3/31/1997	29.5
4/8/1998	29.82
3/19/1999	29.95
10/27/1999	30.07
4/19/2000	31.25
11/30/2000	29.35
3/5/2001	29.86
10/16/2001	29.41
4/9/2002	29.77
12/5/2002	32.85
3/14/2003	35.22
12/12/2003	30.88
3/17/2004	31.91
10/23/2006	29.09
11/8/2007	24.39
11/5/2008	22
3/16/2009	25.8
11/10/2009	21.91
3/17/2010	24.35
11/8/2010	21.4

3/30/2011	24.5
11/7/2011	20.63
4/13/2012	23.2



Copyright © and (P) 1988-2012 Microsoft Corporation and/or its suppliers. All rights reserved.

WELL ID: SB00406627ADD

Data Source: CCWCD

Source Water: South Platte Alluvial

Structure Type: Irrigation Well

UTM_X
520848

UTM_Y
4459245

Latitude
40.28343182

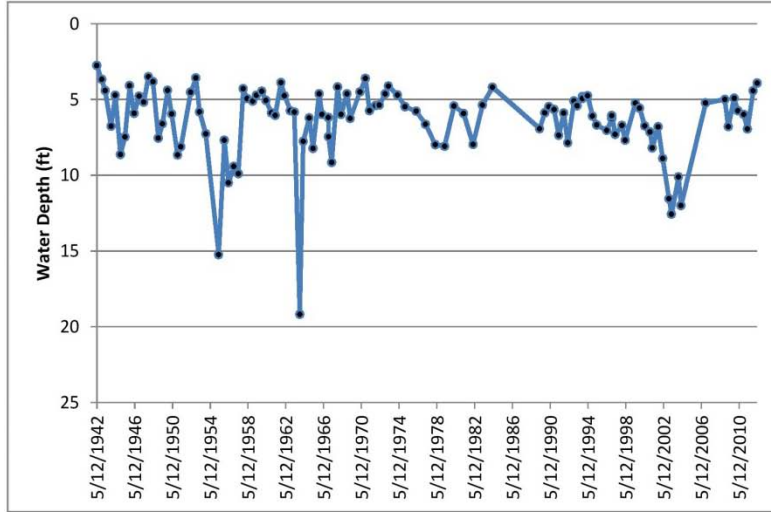
Longitude
-104.7547461

District
2

County
Weld

Loc. Update
2/27/2009

WELL ID: SB00406627ADD



WATER LEVEL DATA

WL Date	Water Level
5/12/1942	2.76
11/16/1942	3.68
3/29/1943	4.42
11/15/1943	6.77
4/24/1944	4.72
11/10/1944	8.63
5/5/1945	7.48
10/29/1945	4.1
4/22/1946	5.92
11/1/1946	4.79
4/28/1947	5.18
10/28/1947	3.5
4/21/1948	3.83
11/15/1948	7.56
4/20/1949	6.61
11/8/1949	4.4
4/11/1950	5.96
11/27/1950	8.66
4/4/1951	8.12
4/16/1952	4.53
11/5/1952	3.59
3/25/1953	5.83
11/24/1953	7.28
4/4/1955	15.24
11/8/1955	7.69
4/17/1956	10.51
11/13/1956	9.43
5/6/1957	9.9
11/12/1957	4.29
4/2/1958	4.95
11/12/1958	5.12
4/2/1959	4.73
10/29/1959	4.47
4/6/1960	5.06
11/2/1960	5.88
3/31/1961	6.06
11/8/1961	3.9
3/22/1962	4.75
11/5/1962	5.74

4/9/1963	5.84
11/5/1963	19.19
3/18/1964	7.77
11/5/1964	6.22
4/2/1965	8.24
11/26/1965	4.63
3/15/1966	6
11/17/1966	6.2
11/18/1966	7.46
3/23/1967	9.16
11/7/1967	4.18
3/20/1968	6
11/5/1968	4.63
3/11/1969	6.26
3/17/1970	4.51
10/19/1970	3.62
3/23/1971	5.75
11/21/1971	5.4
4/6/1972	5.38
11/19/1972	4.64
3/23/1973	4.13
3/12/1974	4.71
12/29/1974	5.48
3/3/1976	5.78
3/1/1977	6.64
3/9/1978	7.98
3/5/1979	8.09
3/6/1980	5.43
3/9/1981	5.93
3/9/1982	7.97
3/11/1983	5.37
4/4/1984	4.2
3/29/1989	6.93
10/16/1989	5.88
3/26/1990	5.48
10/10/1990	5.67
4/9/1991	7.37
10/18/1991	5.9
3/20/1992	7.87
11/18/1992	5.11
3/16/1993	5.42
10/5/1993	4.82
10/6/1993	4.95
4/27/1994	4.75
11/1/1994	6.1
4/16/1995	6.69
5/8/1996	7.05
11/19/1996	6.26

11/20/1996	6.07
3/31/1997	7.3
12/16/1997	6.72
4/17/1998	7.69
5/20/1999	5.25
10/27/1999	5.57
5/11/2000	6.75
12/7/2000	7.15
3/5/2001	8.2
10/16/2001	6.81
4/9/2002	8.89
12/5/2002	11.55
3/14/2003	12.57
12/12/2003	10.12
3/17/2004	12
10/23/2006	5.24
11/7/2008	5
3/16/2009	6.8
11/3/2009	4.93
3/23/2010	5.75
11/8/2010	6
3/30/2011	6.95
11/7/2011	4.43
4/10/2012	3.92



Copyright © and (P) 1995-2012 Microsoft Corporation and/or its suppliers. All rights reserved.

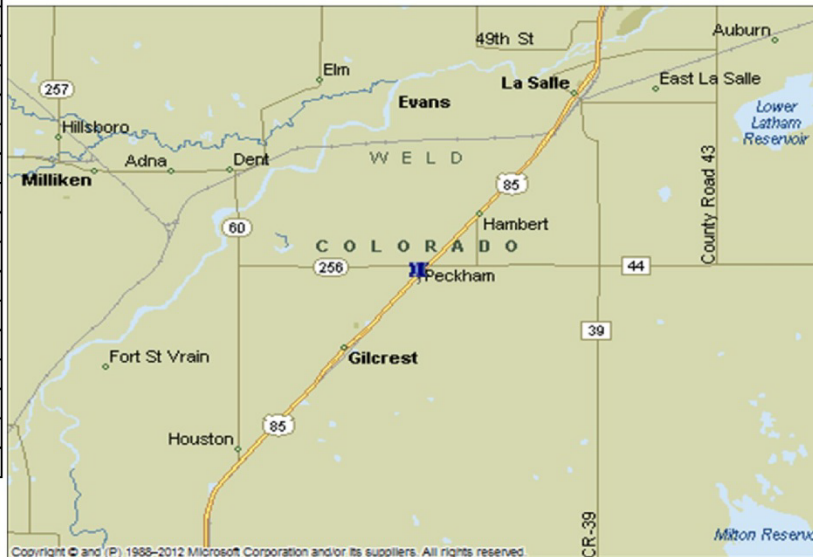
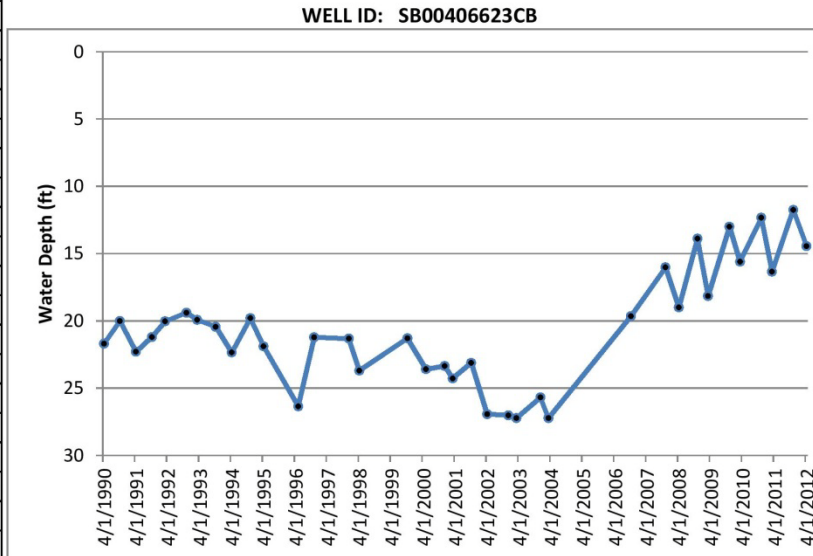
Source Water: South Platte Alluvial

Structure Type: Irrigation Well

UTM_X UTM_Y Latitude Longitude District County Loc. Update
 520927 4461131 40.30042132 -104.7537551 2 Weld 2/27/2009

WATER LEVEL DATA

WL Date	Water Level
4/4/1990	21.7
10/10/1990	20.01
4/1/1991	22.3
10/18/1991	21.2
3/20/1992	20.04
11/18/1992	19.4
3/16/1993	19.92
10/5/1993	20.45
4/27/1994	22.35
11/1/1994	19.8
4/16/1995	21.9
5/8/1996	26.35
11/19/1996	21.22
12/16/1997	21.32
4/17/1998	23.7
10/27/1999	21.3
5/19/2000	23.6
12/7/2000	23.35
3/5/2001	24.28
10/16/2001	23.12
4/10/2002	26.93
12/5/2002	27.02
3/14/2003	27.22
12/12/2003	25.69
3/17/2004	27.23
10/23/2006	19.66
11/13/2007	16.03
4/2/2008	19
11/7/2008	13.9
3/16/2009	18.15
11/3/2009	13.01
3/23/2010	15.6
11/8/2010	12.34
3/30/2011	16.35
11/7/2011	11.76
4/10/2012	14.45



Source Water: South Platte Alluvial

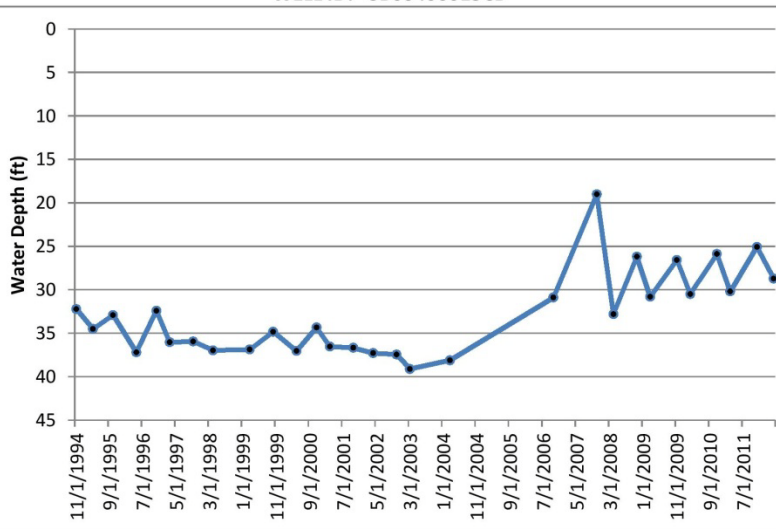
Structure Type: Irrigation Well

UTM_X	UTM_Y	Latitude	Longitude	District	County	Loc. Update
519341	4462386	40.31176615	-104.7723792	2	Weld	2/27/2009

WATER LEVEL DATA

WL Date	Water Level
11/1/1994	32.22
4/16/1995	34.52
10/30/1995	32.91
5/9/1996	37.2
11/13/1996	32.42
3/31/1997	36.05
10/10/1997	35.95
4/8/1998	36.97
3/19/1999	36.88
10/27/1999	34.84
5/19/2000	37.05
11/30/2000	34.35
3/6/2001	36.53
10/18/2001	36.68
4/10/2002	37.29
11/7/2002	37.45
3/14/2003	39.12
3/17/2004	38.11
10/24/2006	30.9
11/8/2007	19.02
4/4/2008	32.81
11/5/2008	26.2
3/16/2009	30.82
11/10/2009	26.58
3/17/2010	30.5
11/8/2010	25.9
3/30/2011	30.2
11/7/2011	25.07
4/13/2012	28.73

WELL ID: SB00406615CB



Source Water: South Platte Alluvial

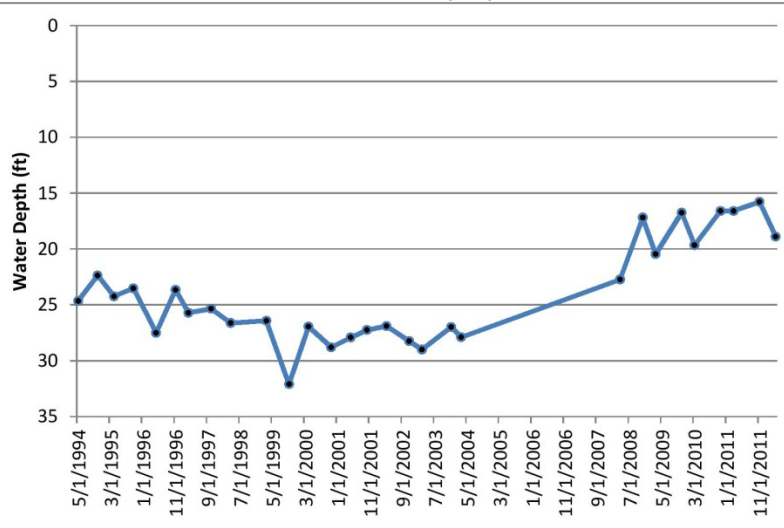
Structure Type: Irrigation Well

UTM_X UTM_Y Latitude Longitude District County Loc. Update
 519678 4463313 40.32010984 -104.7683846 2 Weld 2/27/2009

WATER LEVEL DATA

WL Date	Water Level
5/3/1994	24.65
11/1/1994	22.38
4/16/1995	24.24
10/30/1995	23.52
5/9/1996	27.5
11/13/1996	23.65
3/31/1997	25.71
10/15/1997	25.35
4/8/1998	26.63
3/19/1999	26.42
10/27/1999	32.1
4/14/2000	26.95
11/30/2000	28.8
5/10/2001	27.93
10/18/2001	27.25
4/10/2002	26.9
11/7/2002	28.25
3/14/2003	29
12/12/2003	26.99
3/17/2004	27.9
4/8/2008	22.73
11/5/2008	17.2
3/16/2009	20.45
11/10/2009	16.75
3/17/2010	19.65
11/8/2010	16.6
3/30/2011	16.6
11/7/2011	15.79
4/13/2012	18.9

WELL ID: 32-1 (C32)



Source Water: South Platte Alluvial

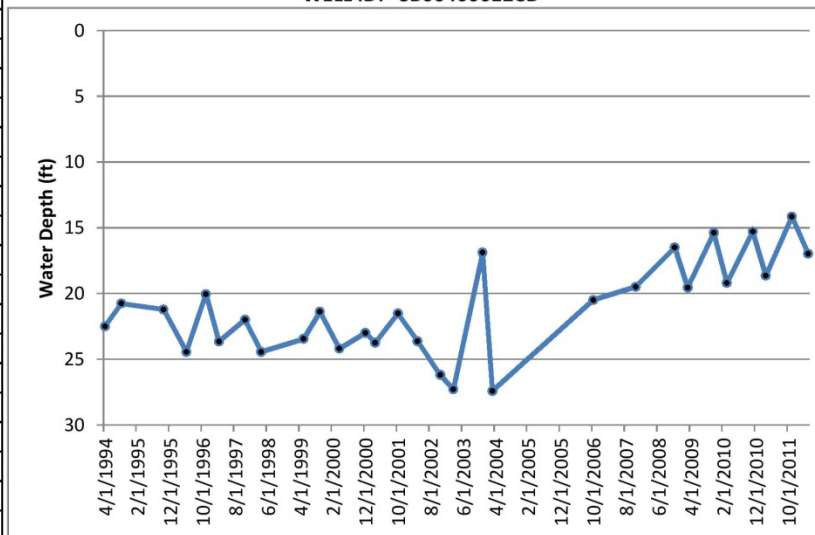
Structure Type: Irrigation Well

UTM_X UTM_Y Latitude Longitude District County Loc. Update
 523397 4463404 40.32083375 -104.7246081 2 Weld 2/27/2009

WATER LEVEL DATA

WL Date	Water Level
4/7/1994	22.5
9/13/1994	20.77
10/30/1995	21.22
5/8/1996	24.45
11/14/1996	20.05
3/27/1997	23.65
11/5/1997	22
4/17/1998	24.45
5/12/1999	23.45
10/28/1999	21.4
4/14/2000	24.2
12/1/2000	23
3/6/2001	23.75
10/18/2001	21.53
4/10/2002	23.63
11/8/2002	26.2
3/17/2003	27.29
12/15/2003	16.89
3/17/2004	27.41
10/24/2006	20.5
11/13/2007	19.5
11/7/2008	16.5
3/16/2009	19.55
11/3/2009	15.39
3/23/2010	19.2
11/8/2010	15.3
3/30/2011	18.65
11/7/2011	14.16
4/10/2012	16.98

WELL ID: SB00406612CD



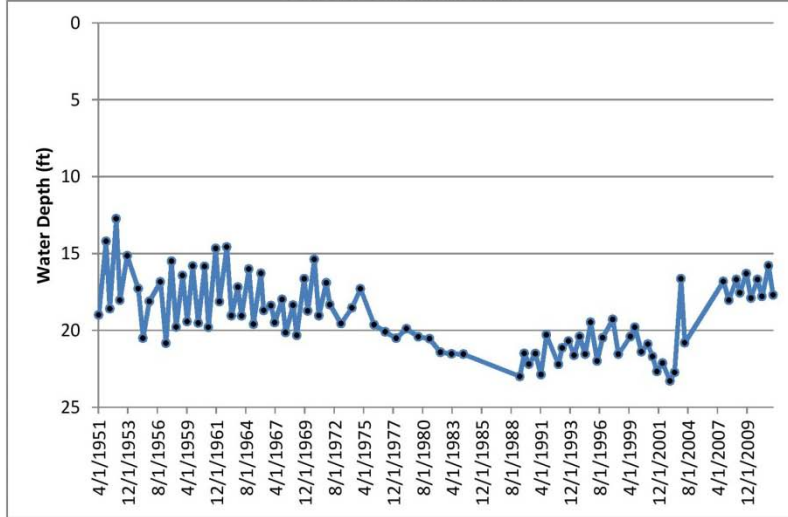
WELL ID: SB00306618CAC

Data Source: CCWCD

Source Water: South Platte Alluvial Structure Type: Irrigation Well

UTM_X UTM_Y Latitude Longitude District County Loc. Update
 514781 4452296 40.22095499 -104.8262775 2 Weld 3/2/2009

WELL ID: SB00306618CAC



WATER LEVEL DATA

WL Date	Water Level
4/4/1951	19
12/5/1951	14.21
4/16/1952	18.6
11/5/1952	12.75
3/25/1953	18.04
11/24/1953	15.15
11/10/1954	17.29
4/4/1955	20.51
11/8/1955	18.12
11/13/1956	16.86
5/6/1957	20.84
11/12/1957	15.51
4/2/1958	19.79
11/12/1958	16.43
4/2/1959	19.44
10/29/1959	15.82
4/6/1960	19.53
11/2/1960	15.85
3/31/1961	19.81
11/8/1961	14.67
3/22/1962	18.14
11/5/1962	14.58
4/9/1963	19.05
11/5/1963	17.2
3/18/1964	19.06
11/10/1964	16.02
4/12/1965	19.6
12/8/1965	16.3
3/16/1966	18.7
11/17/1966	18.4
3/23/1967	19.5
11/6/1967	18
3/20/1968	20.15
11/6/1968	18.37
3/12/1969	20.33
11/5/1969	16.66
3/23/1970	18.74
10/22/1970	15.38
3/24/1971	19.04

11/9/1971	16.92
3/20/1972	18.33
3/20/1973	19.56
3/9/1974	18.53
12/31/1974	17.3
3/3/1976	19.64
3/1/1977	20.1
3/9/1978	20.52
2/28/1979	19.9
3/6/1980	20.42
3/5/1981	20.55
3/10/1982	21.43
3/11/1983	21.53
4/3/1984	21.55
5/11/1989	23
10/16/1989	21.51
3/26/1990	22.2
10/10/1990	21.52
4/1/1991	22.88
10/18/1991	20.3
11/17/1992	22.21
3/16/1993	21.15
10/6/1993	20.7
4/27/1994	21.62
10/25/1994	20.4
4/25/1995	21.55
10/31/1995	19.48
5/9/1996	22
11/14/1996	20.48
10/15/1997	19.3
4/27/1998	21.55
5/20/1999	20.4
10/29/1999	19.8
5/11/2000	21.4
12/6/2000	20.9
5/18/2001	21.71
10/25/2001	22.67
4/2/2002	22.14
12/4/2002	23.29
5/12/2003	22.74
12/11/2003	16.65
4/5/2004	20.81
10/31/2007	16.82
4/25/2008	18.05
12/5/2008	16.7
4/15/2009	17.56
11/12/2009	16.31
4/8/2010	17.9

11/3/2010	16.7
4/6/2011	17.8
11/8/2011	15.81
4/10/2012	17.7



Copyright © and (P) 1988-2012 Microsoft Corporation and/or its suppliers. All rights reserved.

Source Water: South Platte Alluvial

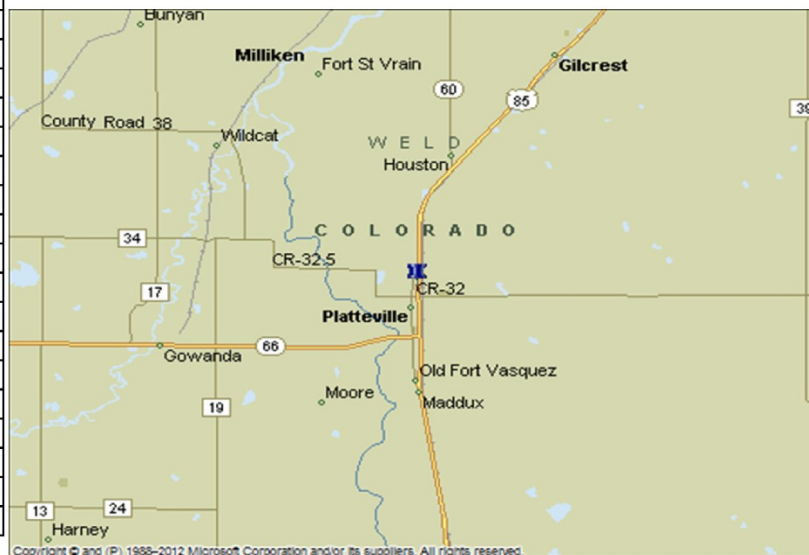
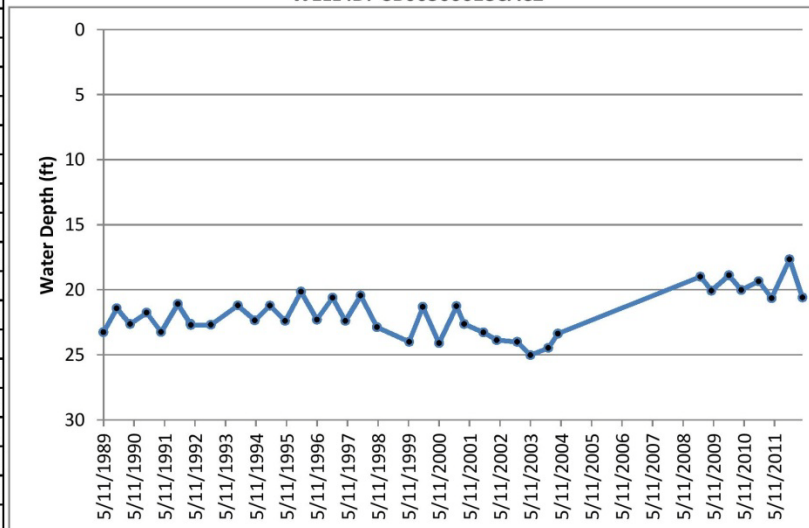
Structure Type: Irrigation Well

UTM_X	UTM_Y	Latitude	Longitude	District	County	Loc. Update
515155	4452306	40.2210384	-104.8218816	2	Weld	3/2/2009

WATER LEVEL DATA

WL Date	Water Level
5/11/1989	23.26
10/16/1989	21.43
3/26/1990	22.64
10/10/1990	21.77
4/1/1991	23.25
10/18/1991	21.1
3/16/1992	22.62
3/23/1992	22.71
11/17/1992	22.69
10/6/1993	21.21
4/27/1994	22.35
10/25/1994	21.22
4/25/1995	22.4
10/31/1995	20.15
5/9/1996	22.3
11/13/1996	20.62
4/14/1997	22.4
10/15/1997	20.45
4/29/1998	22.88
5/20/1999	24
10/29/1999	21.32
5/11/2000	24.1
12/6/2000	21.27
3/7/2001	22.63
10/25/2001	23.29
4/2/2002	23.87
12/4/2002	24.01
5/12/2003	25.02
12/11/2003	24.47
4/5/2004	23.37
12/5/2008	19
4/15/2009	20.07
11/12/2009	18.89
4/8/2010	20.02
11/3/2010	19.35
4/6/2011	20.65
11/8/2011	17.66
4/10/2012	20.6

WELL ID: SB00306618CAC2



HB 1278 Independent Scientific Review Panel

Dr. John Tracy, Idaho Water Resources Research Institute

Dr. Deanna Durnford, CSU Civil Engineering Professor

Dr. Dr. Geoff Delin, U.S. Geological Survey,

Mr. Peter Barkmann, Colorado Geological Survey, Denver

Dr. Willem Schreuder, Principia Mathematica



Concurrent Projects

- * Sterling Pilot Project - DWR
- * Gilcrest Pilot Project - DWR
- * SPDSS Update - CWCB contractor
- * SPDSS Groundwater model evaluation - CSU
- * Monitoring well instrumentation - CDA





[HOME](#) [THE STUDY](#) [BACKGROUND](#) [RESOURCES](#) [FINDINGS](#) [STAKEHOLDER INVOLVEMENT](#) [CONTACT US](#)

WELCOME

In 2012 the Colorado Legislature passed [HB 12-1278](#), which commissions a study of the interaction of the South Platte alluvial aquifer by the [Colorado Water Institute](#) at Colorado State University.

This website has been created and will be maintained by the [Colorado Water Institute](#) It is intended to keep interested parties informed on the products, processes and actions taken as the study unfolds.

In this website, you will find information about the [Study](#); Background about the physical setting of the South Platte River Basin and the history of surface and groundwater use in the South Platte Basin; [Resource](#) material for further study and research; [Findings](#) as the Study progresses, and ways for stakeholders and the public to engage in opportunities for listening to and better understanding different points of view under [Stakeholder Involvement](#).

To learn more about the individual sections click on the word describing the topic of interest to you.

If you have suggestions, questions, or comments please [Contact Us](#).

Latest News

[Study Team Status Report 11/15/2012](#)